

Issue #	Description	Location	Resolution	Monitor	Status
1	South side of P30, L2 reaching concerning levels of surface desiccation prior to coverage	South half of P30, L2 toe	South half P30, L2 covered with as much dark brown, moist, and pliable NCL material as possible prior to end of day by dozer	Yes	Open
				Choose:	Choose:
				Choose:	Choose:
				Choose:	Choose:
				Choose:	Choose:

PHOTOGRAPHS



Photo #: 1

NCL material stockpiled overnight



Photo #: 2

Load of stone dumped from active haul



Photo #: 3

Depth of surface desiccation on south side of  
P30, L2 upon inspection

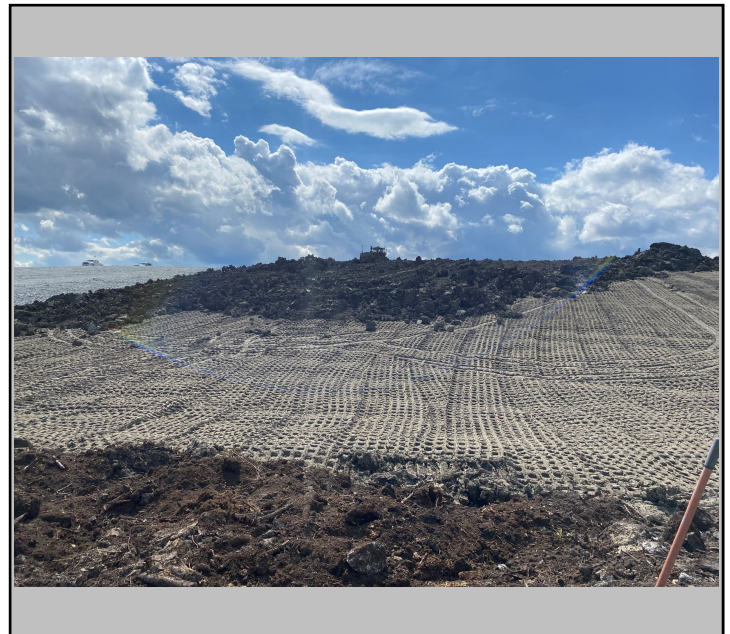


Photo #: 4

P30, L3 placement during desiccation inspection

PHOTOGRAPHS



Photo #: 5

P30, L3 material



Photo #: 6

P30, L3 material



Photo #: 7

P30, L3 placement at end of day



Photo #:

<b>Date:</b>	May 29, 2022	<b>Owner/Client:</b>	New Gold Inc.
<b>Day:</b>	Sunday	<b>Okane Project #:</b>	1003-027
<b>Prepared by:</b>	Brady Hay	<b>Project Location:</b>	Ontario

Number of Pages in Report 4

**Environmental Conditions:**

<u>Morning Conditions</u>	Weather	Rain	Precipitation	0 - 5 mm
Temperature (High/Low)	14	12	Humidity	80 to 100%
			Wind	Moderate
<u>Afternoon Conditions</u>	Weather	Cloudy	Precipitation	5 - 10 mm
Temperature (High/Low)	16	14	Humidity	80 to 100%
			Wind	Moderate

**General Comments**

P30, L2:  
- Areas still exposed were rehydrated by light showers in the morning until heavy rain caused the material to become too wet with standing water in the sheepsfoot holes and at the toe.

P30, L3  
- L3 placement continued in the morning with sporadic light rain helping to rehydrate L2 during the process.  
- at 11:00 construction was halted until 14:00 due to lightning proximity. During this shutdown periods of heavy rain occurred. Once the work stoppage was lifted both L2 and L3 were very wet and standing water was present throughout the panel. CQA contacted CQC to inform them of the conditions and work on the EMRS was stopped for the remainder of the day while the material was left to dry.

General:  
- Comparison sample taken by CQA for 3rd party testing with S534.  
- Previously placed live hauled pile of rock was removed by the excavator and haul trucks.

CQA Representative:

<original signed by>

Issue #	Description	Location	Resolution	Monitor	Status
1	South side of P30, L2 reaching concerning levels of surface desiccation prior to coverage	South half of P30, L2 toe	South half P30, L2 covered with as much dark brown, moist, and pliable NCL material as possible prior to end of day by dozer	Yes	Open
				Choose:	Choose:
				Choose:	Choose:
				Choose:	Choose:
				Choose:	Choose:

**PHOTOGRAPHS**



Photo #: 1

P30, L3 placement continued start of day



Photo #: 2

Previously piled load of stone removed



Photo #: 3

L2 conditions after heavy rainfall



Photo #: 4

L3 conditions after heavy rainfall

**PHOTOGRAPHS**



Photo #: 5

P30, L3 progression following work stoppage  
(end of cover construction for the day)

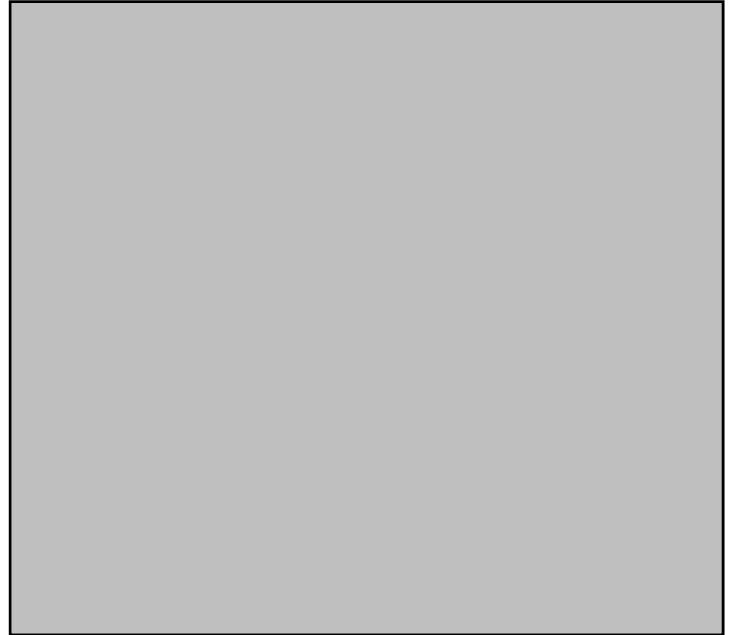


Photo #:



Photo #:



Photo #:

Duplicate Page

<b>Date:</b>	May 30, 2022	<b>Owner/Client:</b>	New Gold Inc.
<b>Day:</b>	Monday	<b>Okane Project #:</b>	1003-027
<b>Prepared by:</b>	Brady Hay	<b>Project Location:</b>	Ontario

Number of Pages in Report 3

**Environmental Conditions:**

<u>Morning Conditions</u>	Weather	Rain	Precipitation	10 - 20 mm
Temperature (High/Low)	18	16	Humidity	80 to 100%
			Wind	Moderate
<u>Afternoon Conditions</u>	Weather	Cloudy	Precipitation	0 mm
Temperature (High/Low)	24	18	Humidity	40 to 60%
			Wind	Low

**General Comments**

General:

- No cover system construction completed due to overnight rain and heavy rainfall in the morning.
- Improved weather in the afternoon began the drying process of the material, but with more rain forecasted for the evening and tomorrow the material will likely need to be re-evaluated.

P30, L2:

- Standing water visible in sheepsfoot marks on the slope with larger areas of standing water at the toe following heavy rain.

P30, L3:

- L3 material visually wet following rain with areas of standing water scattered throughout the lift.

CQA Representative:

<original signed by>

Issue #	Description	Location	Resolution	Monitor	Status
1	South side of P30, L2 reaching concerning levels of surface desiccation prior to coverage	South half of P30, L2 toe	South half P30, L2 covered with as much dark brown, moist, and pliable NCL material as possible prior to end of day by dozer	Yes	Open
				Choose:	Choose:
				Choose:	Choose:
				Choose:	Choose:
				Choose:	Choose:

**PHOTOGRAPHS**



Photo #: 1

P30, L3 material upon afternoon inspection



Photo #: 2

P30, L2 material upon afternoon inspection



Photo #: 3

P30, L2 toe upon afternoon inspection



Photo #: 4

Duplicate Page

<b>Date:</b>	May 31, 2022	<b>Owner/Client:</b>	New Gold Inc.
<b>Day:</b>	Tuesday	<b>Okane Project #:</b>	1003-027
<b>Prepared by:</b>	Brady Hay	<b>Project Location:</b>	Ontario

Number of Pages in Report 3

**Environmental Conditions:**

<u>Morning Conditions</u>	Weather	Showers	Precipitation	0 - 5 mm
Temperature (High/Low)	13	13	Humidity	80 to 100%
			Wind	Moderate
<u>Afternoon Conditions</u>	Weather	Showers	Precipitation	0 - 5 mm
Temperature (High/Low)	14	13	Humidity	80 to 100%
			Wind	High

**General Comments**

General:  
- No cover system construction completed due to overnight rain and showers throughout the day.

P30, L2:  
- Standing water visible in sheepsfoot marks on the slope with larger areas of standing water at the toe following rain.

P30, L3:  
- L3 material visually wet following rain with areas of standing water scattered throughout the lift.

CQA Representative:

<original signed by>

Issue #	Description	Location	Resolution	Monitor	Status
1	South side of P30, L2 reaching concerning levels of surface desiccation prior to coverage	South half of P30, L2 toe	South half P30, L2 covered with as much dark brown, moist, and pliable NCL material as possible prior to end of day by dozer	Yes	Open
				Choose:	Choose:
				Choose:	Choose:
				Choose:	Choose:
				Choose:	Choose:

**PHOTOGRAPHS**



Photo #: 1

P30, L2 morning conditions



Photo #: 2

P30, L3 morning conditions



Photo #: 3

P30, L2 EOD conditions



Photo #: 4

P30, L3 EOD conditions

<b>Date:</b>	June 1, 2022	<b>Owner/Client:</b>	New Gold Inc.
<b>Day:</b>	Wednesday	<b>Okane Project #:</b>	1003-027
<b>Prepared by:</b>	Brady Hay	<b>Project Location:</b>	Ontario

Number of Pages in Report 3

**Environmental Conditions:**

<u>Morning Conditions</u>		Weather	Clear	Precipitation	0 mm
Temperature (High/Low)	15   6	Humidity	60 to 80%	Wind	Low
<u>Afternoon Conditions</u>		Weather	Clear	Precipitation	0 mm
Temperature (High/Low)	19   15	Humidity	20 to 40%	Wind	Moderate

**General Comments**

General:

- No cover system construction completed as material was given time to dry following high levels of rain over the past three days.
- Met with Mitchell Hearn to discuss the current conditions of P30 material. Based on the material conditions near end of day it is likely construction can resume tomorrow barring any further showers.

P30, L2:

- Standing water visible in sheepsfoot marks on the slope with larger areas of standing water at the toe upon morning inspection.
- Warm temperatures and moderate winds throughout the day aided in the drying process of L2. Upon an evening inspection the standing water in the sheepsfoot marks had dried with moist material remaining in the indents. A thin layer of crust had formed on the slope, with areas of standing water still present at the toe.

P30, L3:

- L3 material visually wet following rain with areas of standing water scattered throughout the lift upon morning inspection.
- Improved weather conditions aided the drying of L3. Upon an evening inspection there was a thin layer of crust at the surface of L3 with wet material underneath. Standing water was still present in dozer ruts and at the toe.

CQA Representative:

<original signed by>

Issue #	Description	Location	Resolution	Monitor	Status
1	South side of P30, L2 reaching concerning levels of surface desiccation prior to coverage	South half of P30, L2 toe	South half P30, L2 covered with as much dark brown, moist, and pliable NCL material as possible prior to end of day by dozer	Yes	Open
				Choose:	Choose:
				Choose:	Choose:
				Choose:	Choose:
				Choose:	Choose:

**PHOTOGRAPHS**



Photo #: 1

P30, L2 morning conditions



Photo #: 2

P30, L3 morning conditions



Photo #: 3

P30, L3 EOD conditions



Photo #: 4

P30, L2 EOD conditions

**PHOTOGRAPHS**



Photo #: 5

P30, L2 toe EOD conditions



Photo #:



Photo #:



Photo #:

<b>Date:</b>	June 2, 2022	<b>Owner/Client:</b>	New Gold Inc.
<b>Day:</b>	Thursday	<b>Okane Project #:</b>	1003-027
<b>Prepared by:</b>	Blake Weinrauch	<b>Project Location:</b>	Ontario

Number of Pages in Report 3

**Environmental Conditions:**

<u>Morning Conditions</u>	Weather	Clear	Precipitation	0 mm
Temperature (High/Low)	9	5	Humidity	60 to 80%
			Wind	Low
<u>Afternoon Conditions</u>	Weather	Cloudy	Precipitation	0 - 5 mm
Temperature (High/Low)	10	6	Humidity	80 to 100%
			Wind	Moderate

**General Comments**

General:

- No cover system construction completed due to equipment and manpower being utilized elsewhere.
- Met with Mitchell Hearn and Garry Noga of New Gold to discuss current conditions and plans for resuming cover construction. New Gold planned on returning equipment to EMRS to resume construction on June 3.

P30, L2:

- Bottom of sheepsfoot roller divots showing some moisture with the top showing a thin crust.
- Very light afternoon showers keeping L2 slightly moist.
- Standing water at toe of slope minimal.

P30, L3:

- Material drying continues at L3 with a thin crust forming on top, underlain by moist material.
- Pockets of standing water still present.

CQA Representative:

<original signed by>

Issue #	Description	Location	Resolution	Monitor	Status
1	South side of P30, L2 reaching concerning levels of surface desiccation prior to coverage	South half of P30, L2 toe	South half P30, L2 covered with as much dark brown, moist, and pliable NCL material as possible prior to end of day by dozer	Yes	Open
				Choose:	Choose:
				Choose:	Choose:
				Choose:	Choose:
				Choose:	Choose:

PHOTOGRAPHS



Photo #: 1

P30 L2 conditions in the morning



Photo #: 2

P30 L2 showing some surface drying at top of sheepsfoot roller near end of day



Photo #: 3

P30 L3 material drying at end of day, some pockets of water still present



Photo #:

<b>Date:</b>	June 3, 2022	<b>Owner/Client:</b>	New Gold Inc.
<b>Day:</b>	Friday	<b>Okane Project #:</b>	1003-027
<b>Prepared by:</b>	Blake Weinrauch	<b>Project Location:</b>	Ontario

Number of Pages in Report 3

**Environmental Conditions:**

<u>Morning Conditions</u>		Weather	Clear	Precipitation	0 mm
Temperature (High/Low)	12   5	Humidity	60 to 80%	Wind	Low
<u>Afternoon Conditions</u>		Weather	Fair	Precipitation	0 mm
Temperature (High/Low)	20   11	Humidity	20 to 40%	Wind	Moderate

**General Comments**

General:

- No cover system construction completed.
- Met with Mitchell Hearn of New Gold to discuss current conditions and plans for resuming cover construction. New Gold advised that cover construction likely would not resume until Monday, June 6th.
- Okane brought up concerns that rework would be required to the portion of P30 L2, as it has been uncovered since May 27th. Okane advised New Gold that the desiccated top layer of L2 will need to be skimmed, replacement material added, and re-compacted.

P30, L2:

- All previous moisture from heavy rainfalls had dried with the exception of two visibly moist areas at the toe.
- Desiccation reaching approximately 2-4cm throughout L2.

P30, L3:

- Material drying continues and a crust forming. Pockets of standing water still present.

CQA Representative:

<original signed by>

Issue #	Description	Location	Resolution	Monitor	Status
1	South side of P30, L2 reaching concerning levels of surface desiccation prior to coverage	South half of P30, L2 toe	South half P30, L2 covered with as much dark brown, moist, and pliable NCL material as possible prior to end of day by dozer	Yes	Open
				Choose:	Choose:
				Choose:	Choose:
				Choose:	Choose:
				Choose:	Choose:

**PHOTOGRAPHS**



Photo #: 1

P30 L2 dried by end of day



Photo #: 2

P30 L2 desiccation reaching approximately 2-4 cm throughout



Photo #:



Photo #:

<b>Date:</b>	June 4, 2022	<b>Owner/Client:</b>	New Gold Inc.
<b>Day:</b>	Saturday	<b>Okane Project #:</b>	1003-027
<b>Prepared by:</b>	Blake Weinrauch	<b>Project Location:</b>	Ontario

Number of Pages in Report 3

**Environmental Conditions:**

<u>Morning Conditions</u>	Weather	Clear	Precipitation	0 mm
Temperature (High/Low)	16	4	Humidity	60 to 80%
			Wind	Low
<u>Afternoon Conditions</u>	Weather	Clear	Precipitation	0 mm
Temperature (High/Low)	19	15	Humidity	20 to 40%
			Wind	Low

**General Comments**

General:  
- No cover system construction completed.

P30, L2:  
-Desiccation advancing throughout L2.

P30, L3:  
-Material drying continues. Pockets of standing water still present.

CQA Representative:

<original signed by>

Issue #	Description	Location	Resolution	Monitor	Status
1	South side of P30, L2 reaching concerning levels of surface desiccation prior to coverage	South half of P30, L2 toe	South half P30, L2 covered with as much dark brown, moist, and pliable NCL material as possible prior to end of day by dozer	Yes	Open
				Choose:	Choose:
				Choose:	Choose:
				Choose:	Choose:
				Choose:	Choose:

PHOTOGRAPHS



Photo #: 1

P30 L2 desiccation continues



Photo #: 2

P30 L2 at end of day



Photo #: 3

P30 L3 at end of day



Photo #:

<b>Date:</b>	June 5, 2022	<b>Owner/Client:</b>	New Gold Inc.
<b>Day:</b>	Sunday	<b>Okane Project #:</b>	1003-027
<b>Prepared by:</b>	Blake Weinrauch	<b>Project Location:</b>	Ontario

Number of Pages in Report 3

**Environmental Conditions:**

<u>Morning Conditions</u>	Weather	Clear	Precipitation	0 mm
Temperature (High/Low)	15	7	Humidity	80 to 100%
			Wind	Low
<u>Afternoon Conditions</u>	Weather	Cloudy	Precipitation	0 - 5 mm
Temperature (High/Low)	17	14	Humidity	20 to 40%
			Wind	High

**General Comments**

General:  
 - No cover system construction completed.  
 - Met with Mitchell Hearn of New Gold who informed Okane that New Gold was hopeful to return to cover construction on Tuesday, June 7th.  
 - Very light afternoon showers

P30, L2:  
 -Desiccation advancing throughout L2.

P30, L3:  
 -Material drying continues. Pockets of standing water still present.

CQA Representative:

<original signed by>

Issue #	Description	Location	Resolution	Monitor	Status
1	South side of P30, L2 reaching concerning levels of surface desiccation prior to coverage	South half of P30, L2 toe	South half P30, L2 covered with as much dark brown, moist, and pliable NCL material as possible prior to end of day by dozer	Yes	Open
				Choose:	Choose:
				Choose:	Choose:
				Choose:	Choose:
				Choose:	Choose:

**PHOTOGRAPHS**



Photo #: 1

P30 L2 desiccation continues



Photo #:



Photo #:



Photo #:

<b>Date:</b>	June 6, 2022	<b>Owner/Client:</b>	New Gold Inc.
<b>Day:</b>	Monday	<b>Okane Project #:</b>	1003-027
<b>Prepared by:</b>	Blake Weinrauch	<b>Project Location:</b>	Ontario

Number of Pages in Report 3

**Environmental Conditions:**

<u>Morning Conditions</u>	Weather	Clear	Precipitation	0 mm
Temperature (High/Low)	17	7	Humidity	60 to 80%
			Wind	Low
<u>Afternoon Conditions</u>	Weather	Fair	Precipitation	0 mm
Temperature (High/Low)	21	18	Humidity	40 to 60%
			Wind	Low

**General Comments**

General:  
- No cover system construction completed.

P30, L2:  
-Desiccation advancing throughout L2.

P30, L3:  
-Material drying continues. Pockets of standing water still present.

CQA Representative:

<original signed by>

Issue #	Description	Location	Resolution	Monitor	Status
1	South side of P30, L2 reaching concerning levels of surface desiccation prior to coverage	South half of P30, L2 toe	South half P30, L2 covered with as much dark brown, moist, and pliable NCL material as possible prior to end of day by dozer	Yes	Open
				Choose:	Choose:
				Choose:	Choose:
				Choose:	Choose:
				Choose:	Choose:

**PHOTOGRAPHS**



Photo #: 1

P30 L2 desiccation continues

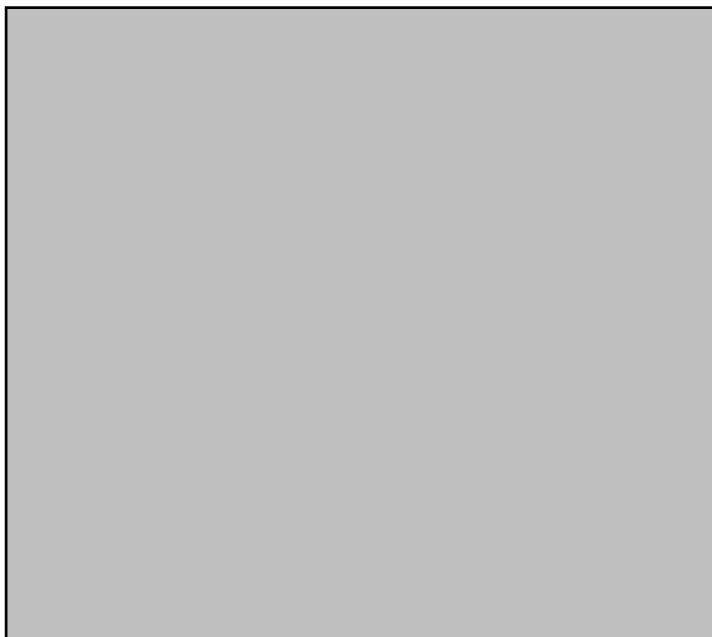


Photo #:

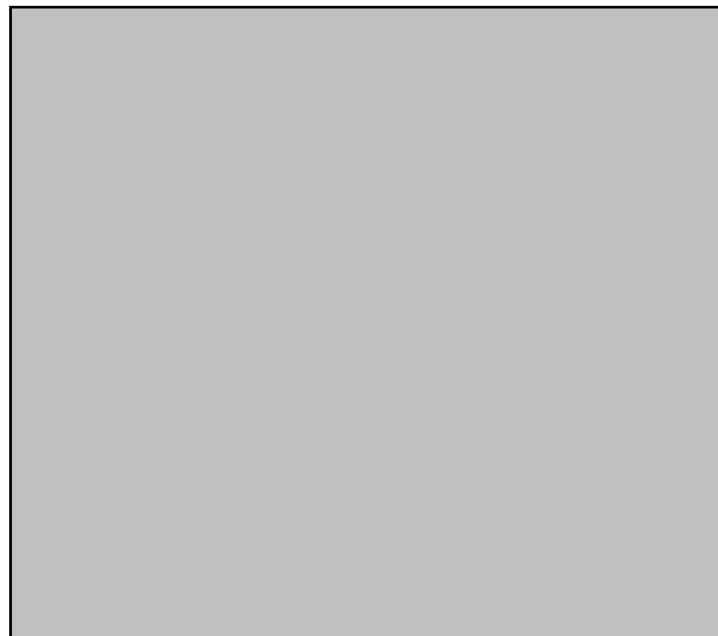


Photo #:

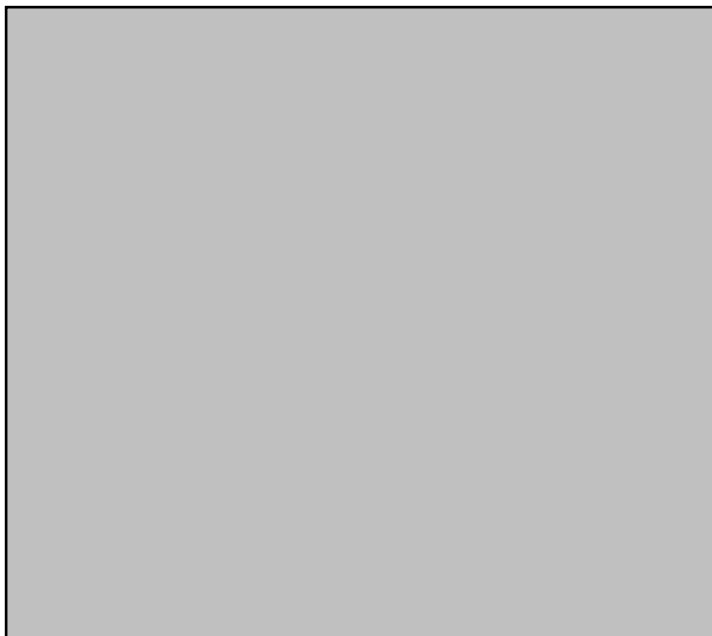


Photo #:

<b>Date:</b>	June 7, 2022	<b>Owner/Client:</b>	New Gold Inc.
<b>Day:</b>	Tuesday	<b>Okane Project #:</b>	1003-027
<b>Prepared by:</b>	Blake Weinrauch	<b>Project Location:</b>	Ontario

Number of Pages in Report 3

**Environmental Conditions:**

<u>Morning Conditions</u>	Weather	Clear	Precipitation	0 mm
Temperature (High/Low)	22	11	Humidity	40 to 60%
			Wind	Low
<u>Afternoon Conditions</u>	Weather	Clear	Precipitation	0 mm
Temperature (High/Low)	25	22	Humidity	20 to 40%
			Wind	Low

**General Comments**

General:  
- No cover system construction completed.

P30, L2:  
-Desiccation advancing throughout L2.

P30, L3:  
-Material drying continues. Pockets of standing water still present.

CQA Representative:

<original signed by>

Issue #	Description	Location	Resolution	Monitor	Status
1	South side of P30, L2 reaching concerning levels of surface desiccation prior to coverage	South half of P30, L2 toe	South half P30, L2 covered with as much dark brown, moist, and pliable NCL material as possible prior to end of day by dozer	Yes	Open
				Choose:	Choose:
				Choose:	Choose:
				Choose:	Choose:
				Choose:	Choose:

**PHOTOGRAPHS**



Photo #: 1

P30 L2 desiccation continues



Photo #: 2

Current conditions at P30 L2



Photo #: 3

Current conditions at P30 L3

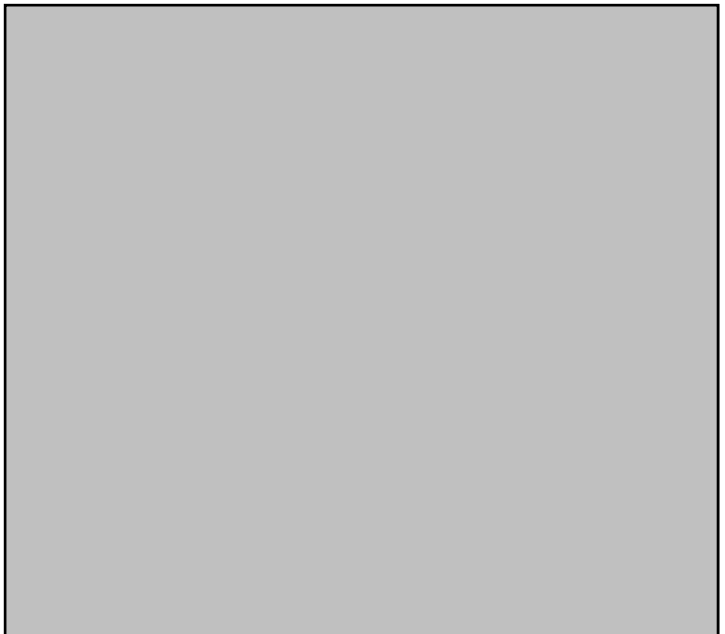


Photo #:

<b>Date:</b>	June 8, 2022	<b>Owner/Client:</b>	New Gold Inc.
<b>Day:</b>	Wednesday	<b>Okane Project #:</b>	1003-027
<b>Prepared by:</b>	Blake Weinrauch	<b>Project Location:</b>	Ontario

Number of Pages in Report 3

**Environmental Conditions:**

<u>Morning Conditions</u>	Weather	Clear	Precipitation	0 mm
Temperature (High/Low)	20	8	Humidity	60 to 80%
			Wind	Low
<u>Afternoon Conditions</u>	Weather	Clear	Precipitation	0 mm
Temperature (High/Low)	24	20	Humidity	20 to 40%
			Wind	Moderate

**General Comments**

General:  
- No cover system construction completed.

P30, L2:  
-Desiccation advancing throughout L2.

P30, L3:  
-Material drying continues. Pockets of standing water still present.

CQA Representative:

<original signed by>

Issue #	Description	Location	Resolution	Monitor	Status
1	South side of P30, L2 reaching concerning levels of surface desiccation prior to coverage	South half of P30, L2 toe	South half P30, L2 covered with as much dark brown, moist, and pliable NCL material as possible prior to end of day by dozer	Yes	Open
				Choose:	Choose:
				Choose:	Choose:
				Choose:	Choose:
				Choose:	Choose:

**PHOTOGRAPHS**



Photo #: 1

P30 L2 desiccation continues



Photo #:



Photo #:



Photo #:

<b>Date:</b>	June 9, 2022	<b>Owner/Client:</b>	New Gold Inc.
<b>Day:</b>	Thursday	<b>Okane Project #:</b>	1003-027
<b>Prepared by:</b>	Blake Weinrauch	<b>Project Location:</b>	Ontario

Number of Pages in Report 3

**Environmental Conditions:**

<u>Morning Conditions</u>		Weather	Clear	Precipitation	0 mm
Temperature (High/Low)	21   14	Humidity	40 to 60%	Wind	Low
<u>Afternoon Conditions</u>		Weather	Clear	Precipitation	0 mm
Temperature (High/Low)	23   21	Humidity	20 to 40%	Wind	Low

**General Comments**

General:  
- No cover system construction completed.

P30, L2:  
-Desiccation advancing throughout L2.

P30, L3:  
-Material drying continues. Pockets of standing water still present.

CQA Representative:

<original signed by>

Issue #	Description	Location	Resolution	Monitor	Status
1	South side of P30, L2 reaching concerning levels of surface desiccation prior to coverage	South half of P30, L2 toe	South half P30, L2 covered with as much dark brown, moist, and pliable NCL material as possible prior to end of day by dozer	Yes	Open
				Choose:	Choose:
				Choose:	Choose:
				Choose:	Choose:
				Choose:	Choose:

**PHOTOGRAPHS**



Photo #: 1

P30 L2 desiccation continues

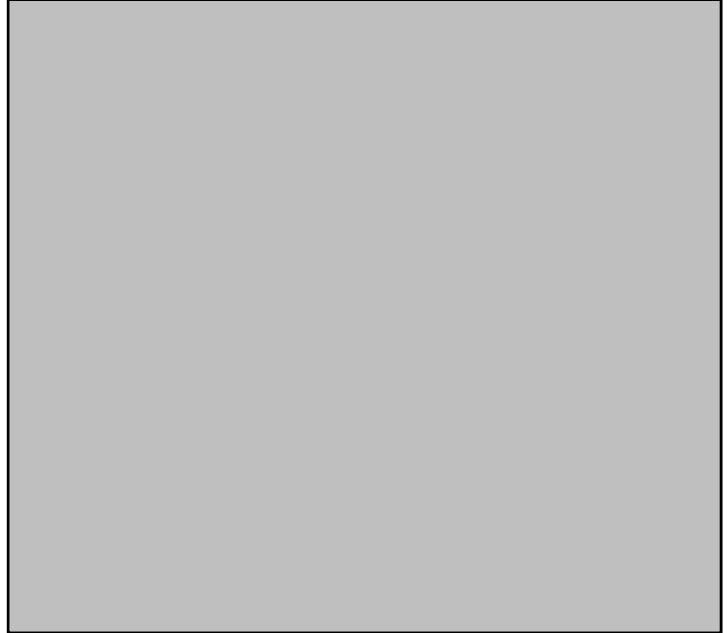


Photo #:



Photo #:



Photo #:

<b>Date:</b>	June 10, 2022	<b>Owner/Client:</b>	New Gold Inc.
<b>Day:</b>	Friday	<b>Okane Project #:</b>	1003-027
<b>Prepared by:</b>	Blake Weinrauch	<b>Project Location:</b>	Ontario

Number of Pages in Report 3

**Environmental Conditions:**

<u>Morning Conditions</u>		Weather	Clear	Precipitation	0 mm
Temperature (High/Low)	23   8	Humidity	40 to 60%	Wind	Still
<u>Afternoon Conditions</u>		Weather	Clear	Precipitation	0 mm
Temperature (High/Low)	26   22	Humidity	20 to 40%	Wind	Low

**General Comments**

General:  
- No cover system construction completed.

P30, L2:  
-Desiccation advancing throughout L2.

P30, L3:  
-Material drying continues. Pockets of standing water still present.

CQA Representative:

<original signed by>

Issue #	Description	Location	Resolution	Monitor	Status
1	South side of P30, L2 reaching concerning levels of surface desiccation prior to coverage	South half of P30, L2 toe	South half P30, L2 covered with as much dark brown, moist, and pliable NCL material as possible prior to end of day by dozer	Yes	Open
				Choose:	Choose:
				Choose:	Choose:
				Choose:	Choose:
				Choose:	Choose:

**PHOTOGRAPHS**



Photo #: 1

P30 L2 desiccation continues

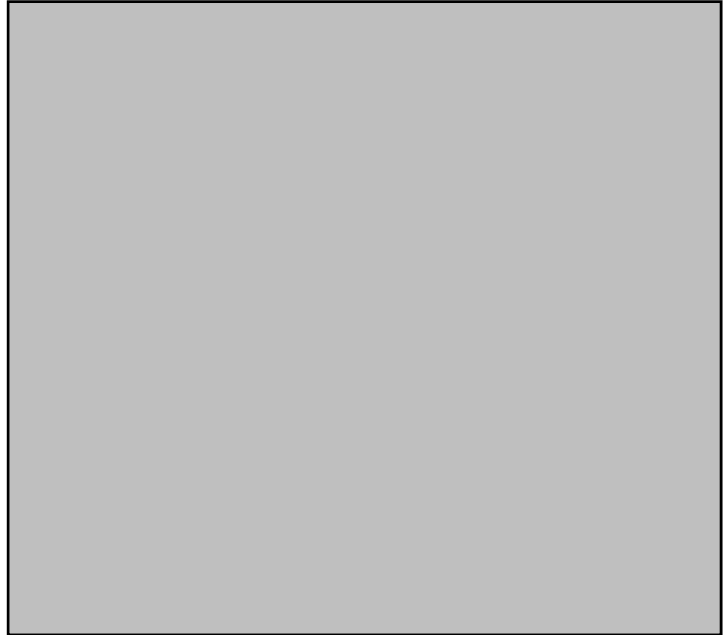


Photo #:



Photo #:



Photo #:

<b>Date:</b>	June 11, 2022	<b>Owner/Client:</b>	New Gold Inc.
<b>Day:</b>	Saturday	<b>Okane Project #:</b>	1003-027
<b>Prepared by:</b>	Blake Weinrauch	<b>Project Location:</b>	Ontario

Number of Pages in Report 3

**Environmental Conditions:**

<u>Morning Conditions</u>	Weather	Showers	Precipitation	0 - 5 mm
Temperature (High/Low)	21	11	Humidity	60 to 80%
			Wind	Low
<u>Afternoon Conditions</u>	Weather	Clear	Precipitation	0 mm
Temperature (High/Low)	25	21	Humidity	20 to 40%
			Wind	Low

**General Comments**

General:  
- No cover system construction completed.

P30, L2:  
- Desiccation advancing throughout L2.  
- Morning showers did not affect L2 as material was dried by end of day.  
- Significant cracking throughout L2 due to dryness and time.

P30, L3:  
-Material drying continues. Pockets of standing water still present.

CQA Representative:

<original signed by>

Issue #	Description	Location	Resolution	Monitor	Status
1	South side of P30, L2 reaching concerning levels of surface desiccation prior to coverage	South half of P30, L2 toe	South half P30, L2 covered with as much dark brown, moist, and pliable NCL material as possible prior to end of day by dozer	Yes	Open
				Choose:	Choose:
				Choose:	Choose:
				Choose:	Choose:
				Choose:	Choose:

**PHOTOGRAPHS**



Photo #: 1

P30 L2



Photo #: 2

P30 L3



Photo #:



Photo #:

<b>Date:</b>	June 12, 2022	<b>Owner/Client:</b>	New Gold Inc.
<b>Day:</b>	Sunday	<b>Okane Project #:</b>	1003-027
<b>Prepared by:</b>	Blake Weinrauch	<b>Project Location:</b>	Ontario

Number of Pages in Report 3

**Environmental Conditions:**

<u>Morning Conditions</u>		Weather	Fair	Precipitation	0 mm
Temperature (High/Low)	22   13	Humidity	60 to 80%	Wind	Low
<u>Afternoon Conditions</u>		Weather	Rain	Precipitation	0 - 5 mm
Temperature (High/Low)	25   19	Humidity	40 to 60%	Wind	Low

**General Comments**

General:  
- No cover system construction completed.

P30, L2:  
- Heavy afternoon rainfall moistened top crust of L2.  
- Some dry material still present underneath moist top layer.  
- Cracking of L2 still present after rainfall due to extreme drying.

P30, L3:  
- Material moistening from rainfall.  
- Pockets of standing water present

CQA Representative:

<original signed by>

Issue #	Description	Location	Resolution	Monitor	Status
1	South side of P30, L2 reaching concerning levels of surface desiccation prior to coverage	South half of P30, L2 toe	South half P30, L2 covered with as much dark brown, moist, and pliable NCL material as possible prior to end of day by dozer	Yes	Open
				Choose:	Choose:
				Choose:	Choose:
				Choose:	Choose:
				Choose:	Choose:

**PHOTOGRAPHS**



Photo #: 1

Dry material still present under rain moistened  
P30 L2 crust



Photo #: 2

P30 L2 cracking still present



Photo #: 3

P30 L3 material moistening



Photo #: